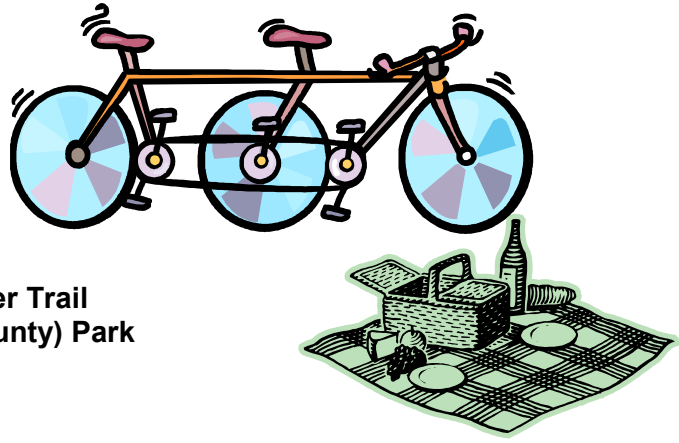


BIKE RIDE AND PICNIC

Date: Sunday, September 13, 2009
Time: 10:00 am
Location: Cedar Creek Park/Yough River Trail Shelter 17(Westmoreland County) Park
Host: Mary Pitzer, 412-279-7154



Come on out for a leisurely bike ride on the YRT, also called the Great Allegheny Passage. We'll bike up and back, so you can bike 8, 10 or more miles up, turn around and come back to the park. Bring your own beverages and picnic lunch and something to share. Bring a chair too. Bike rentals are also available.

Directions: Take 51 South. Ten miles past the Elizabeth Bridge, make a left turn at the light, across from a Ford dealership, at the brown Cedar Creek sign (Port Royal Road). Follow the signs to the park. Make a left at the main entrance into the park. Park near Shelter 17. For a park map, click here: http://www.co.westmoreland.pa.us/parks/lib/parks/forms/cedar_creek_park_08_map.pdf.

