

In-line Skating Summer Ski Training Series

Saturday, May 30, 2009 and the last Saturday of each month through September

Time: 4 pm

Location: Moraine State Park/Watts Bay Marina, Portersville, PA 16051

**Host: Robert Zacharski, 2009 NASTAR National Platinum Division Champion
724-713-0455**

<http://www.skiexpert.net>

Cost: \$20 for Members and \$40 for Non-members

Our Summer Training Series this year will spin around the in-line skating skill development and skill transfer to alpine skiing. The introductory, May session, will be oriented towards the less experienced skaters to give them a boost-start for the series. We'll be pretty much skiing - just using skates - and maybe learn some of the Double Push technique, if we get there this year. Slalom training and 1-15 mile trail skating will dominate our sessions. Trail skating is open to experienced skaters only but novices will find a place to hone their skills in the meeting area, too. NOTE: SKATE RENTALS ARE NOT AVAILABLE.

Directions:

Note: There is no access to the North Shore (Watts Bay Marina) from US-422 E, so follow these directions.

From I-279, Take EXIT 1A onto I-79 N toward ERIE. Go 38.3 miles on I-79 N.

Take EXIT 96 onto PA-488 W toward PORTERSVILLE. Go approximately 0.5 miles on PA-488 W.

Turn right onto US-19 N. Go approximately 0.5 miles on US-19 N.

Bear right onto West Park Road. Go approximately 2.8 miles on West Park Road.

Turn right onto North Shore Drive. Go approximately 4 miles on North Shore Drive to Watts Bay Marina.

If you still want to use US-422 headed east from I-79, follow these directions.

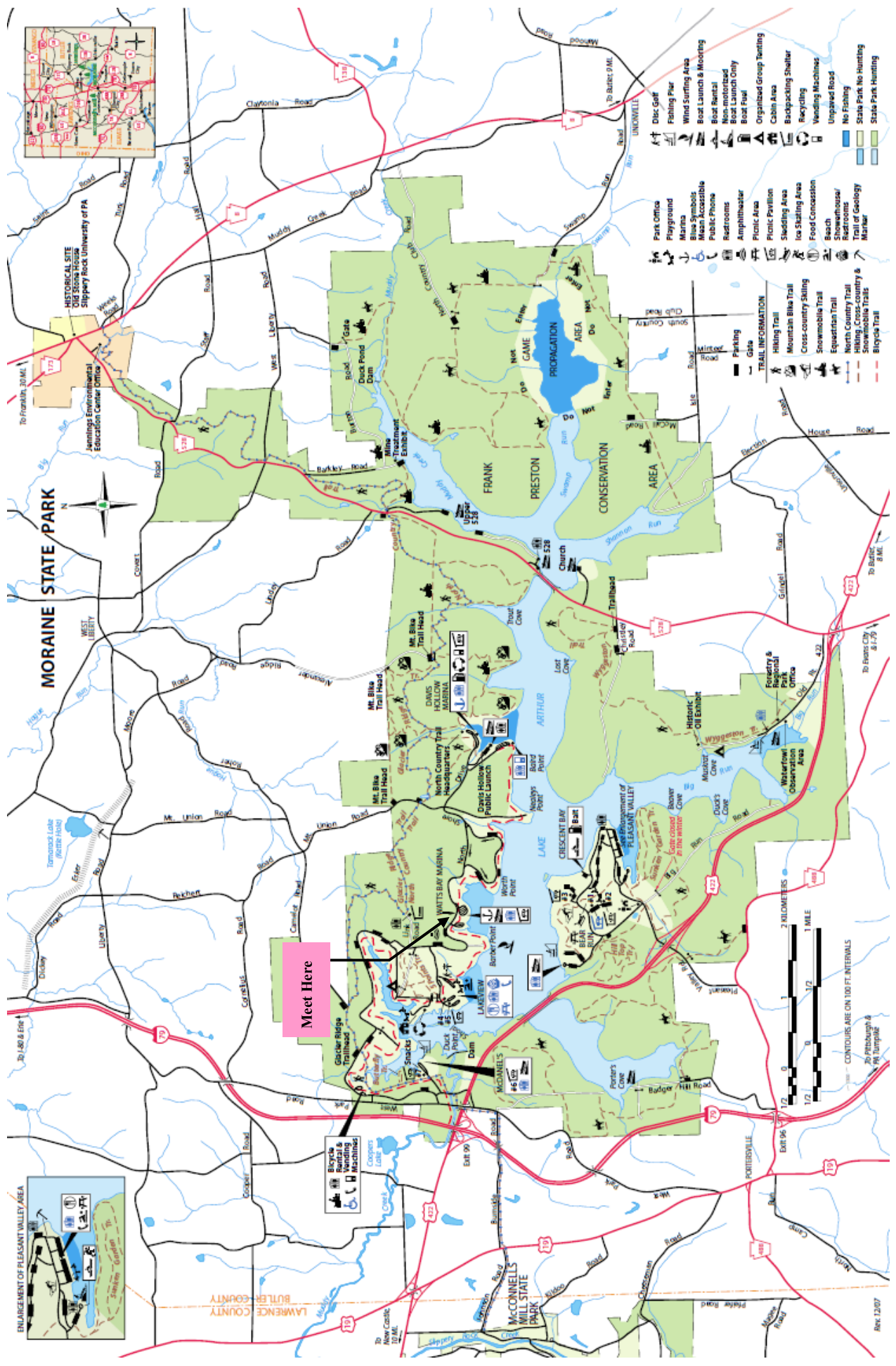
From I-79 N, take EXIT 99 onto US-422 E toward BUTLER. Go approximately 2.25 miles on US-422 E.

Exit US-422 E onto Pleasant Valley Road (Moraine State Park – South Shore).

Turn left onto Pleasant Valley Road, cross under US-422 and turn left onto the ramp for US-422 W.

Go approximately 2 miles on US-422 W and exit onto North Shore Drive.

Go approximately 4.25 miles on North Shore Drive to Watts Bay Marina.



MORaine STATE PARK



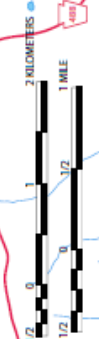
Meet Here

Bicycle Rental & Repair
 Boat Rental
 Canoe & Kayak Rental
 Fishing Gear

- Park Office
- Playground
- Marina
- Blue Symbols
- Mean Accessible
- Public Phone
- Restrooms
- Amphitheater
- Picnic Area
- Picnic Pavilion
- Shedding Area
- Ice Stacking Area
- Food Concession
- Beach
- Showerhouse
- Restrooms
- Trail of Geology
- Mariner
- Disc Golf
- Fishing Pier
- Wind Surfing Area
- Boat Launch & Mooring
- Boat Rental
- Non-motorized Boat Launch Only
- Boat Launch
- Organized Group Tenting
- Cable Area
- Backpacking Shelter
- Recycling
- Vending Machines
- Unpaved Road
- No Fishing
- State Park No Hunting
- State Park Hunting

TRAIL INFORMATION

- Hiking Trail
- Mountain Bike Trail
- Cross-country Skiing
- Snowmobile Trail
- Equestrian Trail
- North Country Trail
- Hiking, Cross-country & Snowmobile trails
- Bicycle Trail



CONTOURS ARE ON 100 FT. INTERVALS

MORAINES STATE PARK

Watts Bay Sailboat Dry Mooring Area

To I-79 & US 422,
South Shore

TO Davis Hollow Marina

